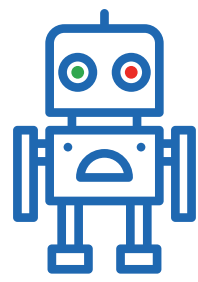


# STELLAR



# ALUMNI

## NAME

Emily Wiseman

## CAREER

Senior Scientist II – Q2 Solutions

## EDUCATION

B.S. University of Central Florida

Ph.D. Florida Institute of Technology

## TEAM

Team 1902, Exploding Bacon

## YEAR(S) ATTENDED THE ORLANDO/ FLORIDA REGIONAL AS A STUDENT

2006



## HOW HAS WHAT YOU LEARNED IN *FIRST* HELPED YOU SUCCEED IN YOUR CAREER?

*FIRST* was one of the first opportunities I had to see a dynamic group in action. You didn't have to be mechanically minded to contribute; there were so many other ways to learn and grow. Anyone and everyone could be a part of the team. Since then, I have had to work in many positions that required several different large teams working together to complete a goal, and learning how to do that with *FIRST* gave me a jump start in my career.

## HOW HAS *FIRST* IMPACTED YOUR LIFE PROFESSIONALLY AND/OR PERSONALLY?

Seeing the enthusiasm and passion people had for a common goal was inspiring. I loved how much people wanted to support and teach others in the STEM fields even if it wasn't directly related to the robot. I ended up pursuing molecular biology rather engineering, but I took a lot of what I learned in my year with *FIRST* into different outreach programs, and my career. My time with *FIRST* was short, but I am so grateful for the experience as it help shape who I am today.